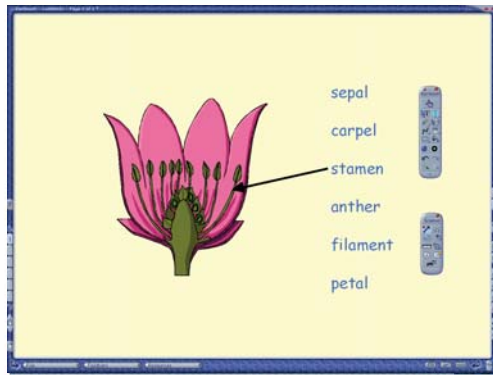


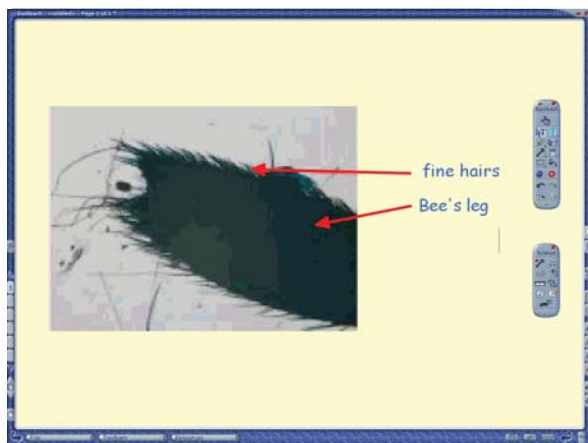
Magnetic Lines



- These lines or arrows can connect any objects on the Easiteach page. Once connected, the lines remain 'stuck' to the object, even if you move it.

Image Capture

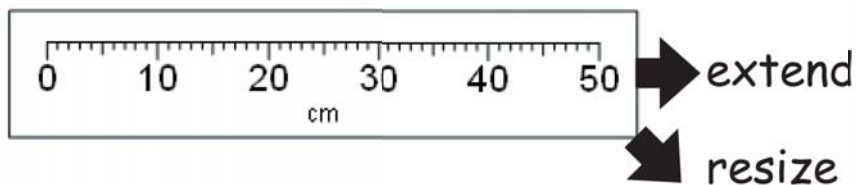
- Capture images from web cameras or microscopes into Easiteach for the whole class to see. The image shown here is a part of a bee's leg, showing where pollen is collected.



- You can annotate an image or take measurements from it with the **Ruler** or **Calliper** tools.

Rulers

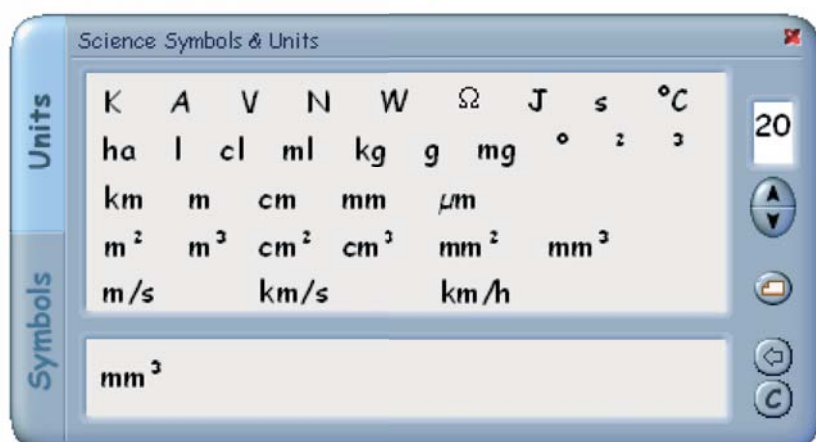
- **Rulers** can be resized, rescaled and rotated to make a variety of measurements on the page.



- In **Use** mode, drag a **Ruler** from a corner to resize it. Drag a **Ruler** from its end to extend it.

Science Symbols and Units

- This palette provides easy access to a variety of scientific symbols and units that are hard to enter from the keyboard.



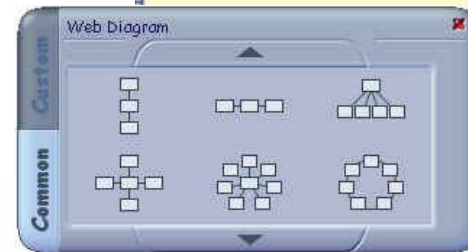
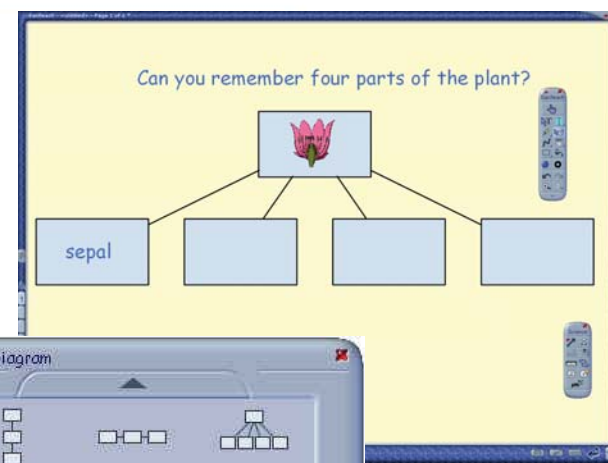
cm²

cm³

- Symbols and units can be dragged directly onto the page, or placed on cards. They remain editable on the page.

Web Diagrams

- Drag a standard diagram onto the page, or click the **Custom** tab to create your own diagram.
- You can move the cells in a diagram and the links will remain intact.
- You can fill or replace cells with pictures or text, or change their colour.



- You can create many different kinds of diagram, e.g. food chains, concept maps, topic webs and life cycle diagrams.

Easiteach Science Toolbar

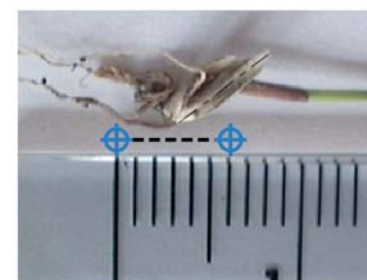
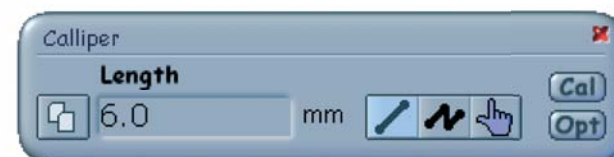


Select Image Source

- Choose the image device (web camera or microscope) from which you want to capture pictures. Ensure that it is connected to your computer.

Calliper

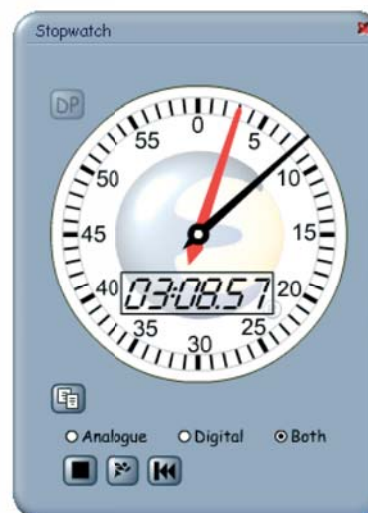
- Use the digital **Calliper** to take measurements from images captured from microscopes or cameras.



- Calibrate the **Calliper** by including a ruler or other object of known dimension in the photograph.

Stopwatch and Timer

- The **Stopwatch** and **Timer** can be used in a variety of class activities or investigations.



- Set the **Timer** duration by dragging the hands on the clock face, or by clicking the minute and second buttons. You can use several Timers at once, by dragging them from the **Science Multimedia Bank**.